

## Scrutiny Task and Finish Panel Agenda



### **Children Services Task and Finish Panel Friday, 5th November, 2010**

**Place:** Committee Room 2, Civic Offices, High Street, Epping

**Time:** 2.00 pm

**Democratic Services Officer:** Adrian Hendry, Office of the Chief Executive  
Tele: 01992 564246 Email: ahendry@eppingforestdc.gov.uk

**Members:**

Councillors Mrs L Wagland (Chairman), Ms R Brookes, Mrs P Brooks, Mrs T Cochrane, Mrs R Gadsby, Ms J Hedges and J Knapman

- 
- 1. APOLOGIES FOR ABSENCE**
  - 2. SUBSTITUTE MEMBERS (COUNCIL MINUTE 39 - 23.7.02)**  

(Assistant to the Chief Executive) To report the appointment of any substitute members for the meeting.
  - 3. NOTES FROM LAST MEETING (Pages 3 - 26)**  

To agree the minutes from the last meeting of this Panel.
  - 4. TERMS OF REFERENCE (Pages 27 - 28)**  

(Chairman/Lead Officer) To note the attached Terms of Reference. The Panel are asked to review the document at each meeting.
  - 5. YOUTH COUNCILLORS MYSTERY SHOPPING REPORT (Pages 29 - 36)**  

To receive a report from the Youth Council on their recent Mystery Shopping exercise on youth clubs and venues in our District.
  - 6. REPORT BACK FROM COUNCILLORS**  

For members to report back to the Panel on the various aspects of research they have carried out since the last meeting.

**7. UPDATING REPORT FROM OFFICERS.**

To receive update reports from various officers subsequent to the general update provided at the last meeting by the lead officer.

Updates to be received are from:

- Gill Wallace, Community Leisure Officer;
- Felicity Hall, Arts Officer;
- James Warwick, Sports Development Officer; and
- Julie Chandler, Assistant Director Community Services and Customer Relations.

**8. DATE OF NEXT MEETING**

To agree a date and start time for the next meeting of this Panel.

**EPPING FOREST DISTRICT COUNCIL  
NOTES OF A MEETING OF CHILDREN SERVICES TASK AND FINISH PANEL  
HELD ON TUESDAY, 21 SEPTEMBER 2010  
IN CONFERENCE ROOM, CIVIC OFFICES, HIGH STREET, EPPING  
AT 7.05 - 8.45 PM**

**Members Present:** Mrs L Wagland (Legal and Estates Portfolio Holder) (Chairman), , Ms R Brookes, Mrs T Cochrane and Ms J Hedges

**Other members present:**

**Apologies for Absence:** Mrs P Brooks and Mrs R Gadsby

**Officers Present** J Chandler (Assistant Director (Community Services and Customer Relations)) and A Hendry (Democratic Services Officer)

**1. APPOINTMENT OF VICE CHAIRMAN**

Councillor Mrs R Brookes was elected Vice Chairman of the meeting.

**2. SUBSTITUTE MEMBERS (COUNCIL MINUTE 39 - 23.7.02)**

The Panel noted that there were no substitute members.

**3. DECLARATIONS OF INTEREST**

No declarations of interest were made.

**4. TERMS OF REFERENCE**

The Assistant Director Community Services and Customer Relations, Julie Chandler, introduced herself as the lead officer for this Panel. She outlined the structure and services provided by Epping Forest District Council. These services were primarily provided for children and young people aged 5 years plus, although there are some targeted programmes for under 5's and young people up to 25 years with special needs. The main programmes are mainly centred on sports and health improvement, holiday play schemes, dance, theatre and arts projects and community based initiatives. There was also a wide range of social inclusion work done on Super Output Area's (SOAs) and disadvantaged areas targeted at young people. There were also in-school road shows and projects to promote health, safety and well being (Crucial Crew and Reality Road show).

The Council's Community Services provide a very wide range of programmes, activities and events for children and young people, including those with additional needs. A significant proportion of the work is funded through external funding secured via competitive application processes to provide initiatives such as social inclusion programmes and programmes targeted at children with additional needs including those with confidence issues, low self esteem, low achievers or those with moderate disabilities. Where the Council is restricted from applying to funding bodies, voluntary groups and parishes are supported to apply for funding for joint projects.

Community Services operational budgets are predominantly utilised for staff costs as the majority of work is delivered by the staff themselves in conjunction with a range of external partners.

It was noted that Essex County Council was the key service provider from pre-birth to age nineteen. They were responsible for providing:

- Education (Primary, secondary and targeted);
- Social care;
- Youth services;
- MAAG's – Multi Agency Action Groups (Youth Services, Social Care, Schools, Police etc.);
- Children Centres.

Essex CC also work closely with the following to provide as complete a services as possible: NHS/ Primary Care Trusts (work may now be devolved to local GPs) who would provide acute and primary care services, antenatal and breastfeeding services and also mental and emotional health and well-being; the Voluntary Sector who would provided such things as youth activities, after school clubs and targeted work with special needs; the Private Sector who provide such things as sport clubs and classes, dance and performing arts clubs and childcare and nurseries; and of course Epping Forest District Council.

The new structure for Essex CC Children's services had been revised for the second time in two years following a recent Ofsted and now included an 'Improvement Board' at the top overlooking a 'Strategic Joint Commissioning Group'; an Executive; local children's commissioning and delivery boards and local children's partnerships. It was noted that the only two areas of children's services that would receive committed funding in the future were Child Protection and Looked After Children.

It was also noted that ECC were still not performing well in terms of Safeguarding and Child Protection, as their latest 'Ofsted' report was classed as unsatisfactory.

EFDC has its own Safeguarding Policy which had been updated in June 2009 and a Corporate Safeguarding Group which had representatives from all service areas, member representation and the voluntary sector. We were the first council in Essex to do so and this has been praised as an example of best practice in Essex.

All staff working directly with children and families are trained in Safeguarding & Promoting the Welfare of Children and Members and other front line staff are also to undergo training in safeguarding practice to enable them to identify problems they may come across in their day to day activities.

**NB.** Copies of Julie Chandler's presentation are attached to these minutes.

The Panel then clarified their expected areas of research and investigation for the purposes of taking the work of the Panel forward. They agreed:

- They should review the purpose and operation of new arrangements for children's services in Essex and the new Essex structure;
- Challenge ECC theoretical and/or strategic plans;
- Identify what was the real effect of services 'on the ground';
- To review ECC youth services in Epping Forest District;
- To review arrangements for safeguarding and promoting the welfare of Epping Forest's children;

- Review the current provision of children and young people's services provided directly by EFDC;
- How to make a positive impact on Children and Young People's lives with less resources; and
- What are EFDC's priorities.

The Panel noted if they had not completed their review by the end of the municipal year they would try and get an interim report out by April 2011.

The Panel decided that the various members should research different aspects of this theme:

- Councillor R Brookes to look at general activities; trampolining programmes for children with additional needs and to attend the Epping Forest Children's Partnership on November 19<sup>th</sup>. Julie Chandler to provide contact details.
- Councillor T Cochrane would look into the special needs and how to improve its delivery to this district. Julie Chandler to identify appropriate contacts for Councillor Cochrane;
- Councillor L Wagland to talk to 'Kids Company' and get their views on Essex County Council services;
- Councillor L Wagland to look at Fostering at Redbridge Council - to get comparative information from them;
- Councillor J Hedges to investigate general services such as Crucial Crew and also to look at obesity. Julie Chandler to advise on contacts;
- Councillor J Knapman to look at and report back on the Essex Safeguarding Children Board;
- Councillor L Wagland to also look at the District's "Killed or Seriously Injured" stats for young people – Caroline Wiggins to be approached about this.
- Julie Chandler to report back on Essex County Council services in general.

**Next Meeting:**

To get Geoff Mangan to come to the Panel's next meeting and speak on schools work and local issues and maybe Fabrizio Ferrari (Sports Development Officer) to talk about various programmes for children and young people in the district.

**Future Meetings:**

To arrange for someone from the NHS/PCT to attend a future meeting.

**5. DATE OF NEXT MEETING**

The Panel agreed that the next meeting was to be held on Friday 5 November, starting at 2pm.

This page is intentionally left blank

# Task and Finish Children's Services Review

---

Overview of services provided for children  
and young people in Epping Forest District

**Julie Chandler**  
Assistant Director  
Community Services & Customer Relations

**September 2010**



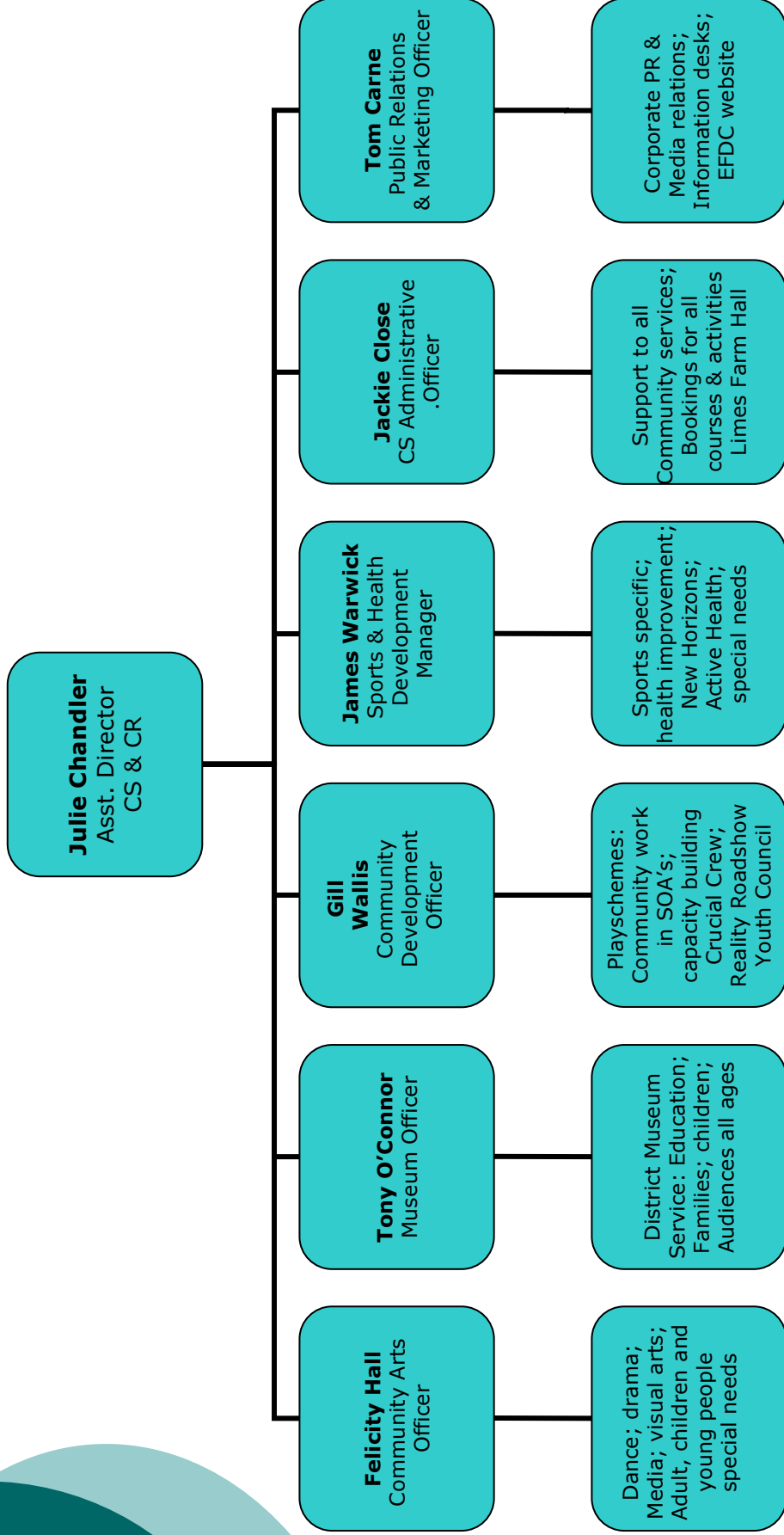
# Content of Presentation

---

1. EFDC Community Services Staff structure
2. Overview of EFDC's contribution to services for children and young people
3. Community Service Budgets
4. Essex Overview of Children's & Young People's Services & 'levels' of provision
5. Essex Safeguarding Children responsibilities
6. EFDC Safeguarding responsibilities
7. Acronyms unveiled....
8. Role of the Children's Services Task & Finish Group



# EFDC Community Services & Customer Relations Structure



# What services are provided by EFDC?

---

EFDC services are primarily provided for children and young people 5 years+, although targeted programmes are also provided for under 5's and up to 25's with special needs

- Sports, physical activity and health improvement programmes (including children with special needs)
- Holiday playschemes, activities and events
- Dance, theatre and arts projects and targeted programmes (special needs and looked after children)
- Social inclusion work in SOA's / disadvantaged areas targeted at young people
- In-school roadshows and projects to promote health, safety and well being (Crucial Crew, Reality Roadshow)
- Externally funded projects (eg. HealthWorks)

# Examples of EFDC work

---

The Council's Community Services Department provides a very wide range of programmes, activities and events for children and young people, including those with additional needs. Much of this provision is funded through external funding secured via competitive application processes. The following provides an idea of the types of provision:

## **Social inclusion programmes** –

targeted sports, dance and arts sessions aimed at young people in disadvantaged areas, to assist in the reduction of anti-social behaviour, crime and vandalism. An example of this is the Limes Farm Project which provides football, multi-sport and dance programme 2 x nights per week for 13 – 18's. Benefits – reduction in ASB, young leaders trained as coaches, greater community respect



**Targeted programmes for children with additional needs** – trampolining classes for children identified by schools as having low self esteem / confidence issues, low achievers or those with moderate disabilities

# More examples.....

---

- **Work with The Willows** – The Arts team undertakes a range of work with children and young people who are 'looked after' and live at 'The Willows', Ongar. Most of the work focuses on using the arts to encourage self esteem; improve interpersonal skills and develop better relationships between residents. Many of these youngsters are transitory and the arts provides an 'even playing field' for them.

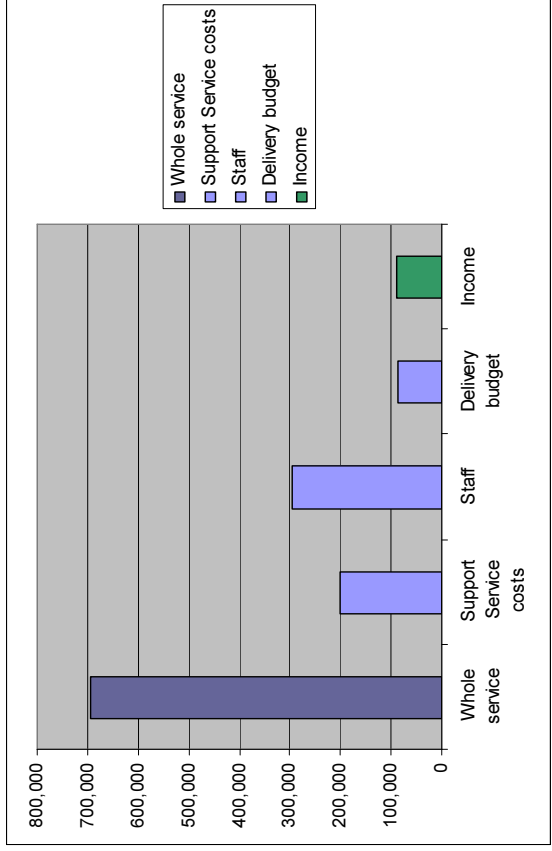


**Community Clubs** – The Community Development Team focuses on the 4 x Super Output Areas of the District- Ongar, Waltham Abbey, Limes Farm (Chigwell) and Oakwood Hill, Loughton. In these areas where there is no direct provision, the team works with the community to establish clubs for children and young people. These range from environmental focus clubs to arts/crafts and multi-sport clubs all which are based in the immediate locality.

# Community Services Operational Budgets

The budgets for Community Services are predominantly utilised for staff costs, as the majority of work is delivered by staff themselves in conjunction with a range of external partners. The following chart outlines the approximate annual budget for all sections within Community Services (with exception of the Museum) and covers 'all costs' associated with the service:

- o CS Administration Team, Community Arts Sports and Health development Community Development



The Museum costs amount to £434K per annum, broken down as follows:  
 Support Services - £94k  
 Staff £215k  
 Buildings £120k  
 Delivery £5k  
 Income £5k

**Community Services Delivery Budget will see £35k saving in 2011/12.**

**External Funding secured in 2008-'11 = £900k+**

# Essex wide service provision....

---





## Essex Key Service providers for pre-birth to 19's

---

The following organisations are the key service providers for children and young people throughout Essex:

- Essex County Council
- NHS/Primary Care Trusts
- Epping Forest District Council
- Voluntary Sector
- Private Sector

# What services are provided?

---

## **Essex County Council:**

- Education – primary, secondary, targeted
- Social Care – looked after children (35x C&YP in Epping Forest), safeguarding, family support, CAMH's
- Youth Services – buildings (2 x in EF – Ongar and Loughton) and outreach work
- MAAG's – Lead on Multi - Agency Action Groups
- Children's Centres

## **NHS and PCT:**

- Acute and Primary Care services
- Antenatal, Breastfeeding
- Mental & Emotional Health & Well Being



## What services are provided? (Cont)

---

### **Voluntary Sector:**

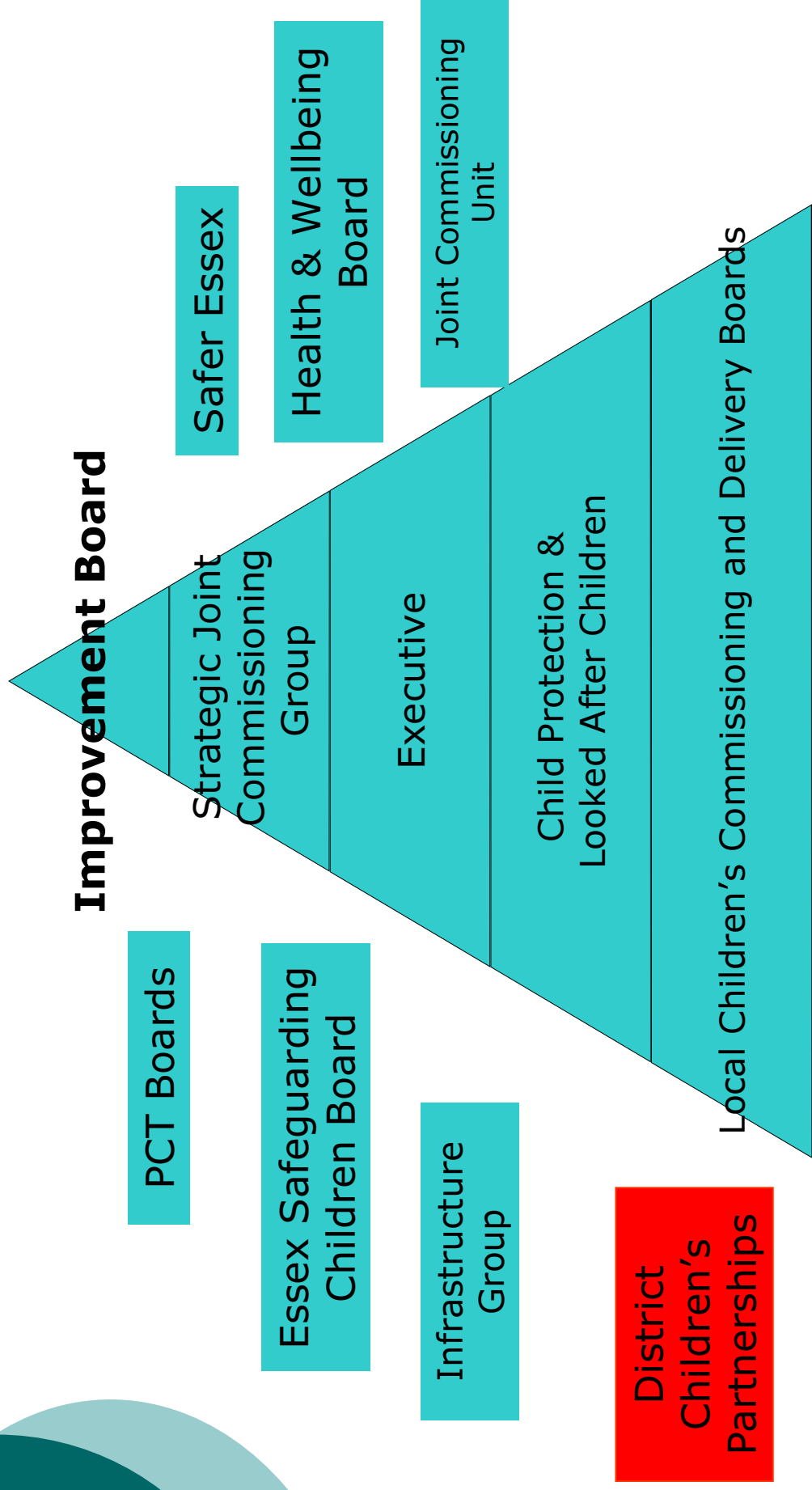
- Youth activities
- After school clubs
- Targeted work with special needs

### **Private Sector:**

- Sports clubs and classes
- Dance & performing arts clubs
- Childcare & Nurseries

# Essex Children's Services Structure

---



## ‘Levels’ of provision (as defined by ECC)

---

Essex County Council classifies children and young people into four categories of wellbeing/need:

- **Level 1 – Universal**  
Children & YP with no additional Needs
- **Level 2 – Vulnerable**  
Children & YP with additional needs
- **Level 3 – Complex**  
Children & YP with complex needs
- **Level 4 – Acute**  
Children and YP whose needs are complex, prolonged or critical

# Safeguarding and Promoting the Welfare of Children.....

---



# Safeguarding Children and Young people

---

## Essex Safeguarding Children Board

- Responsible for monitoring performance of safeguarding throughout ECC and wider partners and for auditing processes including Serious Case Reviews
- Partners include: ECC staff from Children's Services, Social Care, Education etc., Police, District Council X 2, Voluntary Sector, NHS, Probation....
- 'Section 11 Audits' required of \*District and Borough Councils, PCT/NHS, Schools etc

\*Detailed self audit of services provided by Council in regard to safeguarding and promoting the welfare of children. This includes EFDC Policy and Procedures; Recruitment and Selection (CRB etc), management structures and lines of responsibility and frontline delivery – community services, housing and others. Also challenges customer input to services provided and regard to children and young people with additional needs. This is assessed by independent Safeguarding authority



# West Stay Safe Group

---

- **Newly formed to replace Local Safeguarding Group –**  
consists of 'local' reps from Social Care, NHS and PAH (Consultant Paediatrician & Lead CP Nurse), Schools, District and Borough Councils, Police, Voluntary Sector, wide range of ECC staff – MAAG, Infrastructure Group, Essex Drug and Alcohol Action Team etc.
- **Purpose of Group:**
  - Assess training needs and provide training
  - Ensure effective communication regarding SCR's
  - Review local performance
  - Promote clear access and referral routes
  - Produce an action plan that responds to local issues

# EFDC Policy, Procedures and implementation of Safeguarding practice

---

- Safeguarding Policy – updated June 2009
- Service specific procedures
- Corporate Safeguarding Group – Reps from all service areas, Member rep, VAEF, SLM ( Group promoted as Best Practice in Essex)
- New 'whole Council' training programme - being implemented Autumn 2010. To additionally cover frontline staff in Information; Benefits; Planning/Building Control and all Members
- Section 11 Audit - result Effective or 'Exceeds Requirements' overall. However, scored as 'Less Effective' in respect of not having a HR Safer Recruitment Policy; need for inclusion of Safeguarding training within formal induction process and storage of Child Protection data



## Acronyms unveiled.....

---

- MAAG = Multi Agency Action Group
- CYP= Children and Young People
- CYPP= Children and Young People's Plan – (no longer)
- CYPSP – Children and Young People's Strategic Partnership (no longer exists)
- ESCB= Essex Safeguarding Children Board
- LCTB = Local Children's Trust Board
- LSSG= Local Stay Safe Group
- IYS = Integrated Youth Services
- YOF = Youth Opportunities Fund
- ECVYS = Essex Council for Voluntary Youth Services
- CAF = Common Assessment Framework
- CRB= Criminal Records Bureau
- CAFCASS = Children and Family Court Advisory and Support Service
- IRT = Initial Response Team
- CAMHS = Children and Adolescent Mental Health Services





# Task & Finish Group Role

---

- Review the purpose and operation of new arrangements for children's services in Essex and the new Essex structure
- Challenge ECC theoretical/'strategic' plans
- What is the real effect of services 'on the ground'?
- Review Essex County Council Youth Services in Epping Forest District
- Review arrangements for Safeguarding & Promoting the Welfare of Epping Forest's children, seeking to identify communication pathways and effectiveness of information sharing across the wider partnership
- Review current provision of children and young people's services provided directly by the Council
- How do we make a positive impact on C&YP lives with less resources?
- What are our (EFDC) priorities?

This page is intentionally left blank

### **Origin:**

The Cabinet at its meeting on 8 March 2010 considered a report about Essex Children's Trust. The Children's Act 2004 provided the legal underpinning for the national framework established by "Every Child Matters: Change for Children" with District Councils having a duty to cooperate in the making of arrangements to improve well being for children and young people 19 years or under. The most specific duty is to safeguard and promote the welfare of children alongside the more general "duty to cooperate" within Children's Trust arrangements.

At the inaugural meeting of the Essex Children's Trust Partnership Board on 27 November 2009 it had been agreed that a Memorandum of Agreement be entered into by all the constituent partners with the aim of demonstrating a commitment to a shared approach and to get all the partners working together to achieve common objectives.

The Cabinet decided that the Memorandum of agreement should not be signed as it did not appear to be clear, concise and contain specific proposals to safeguard the welfare of children or an assurance that Essex County Council would embrace best practice. The cabinet expressed the view that the emphasis appeared to be on bureaucracy rather than results, with as much responsibility as possible delegated to the borough and district councils. The Cabinet also requested that a Task and Finish Scrutiny Panel should be established to examine the Council's approach to Children's Services and its provision throughout the District.

At its meeting on 15 April 2010, the Overview and scrutiny Committee agreed that a Task and Finish Scrutiny Panel should be established to examine the Council's approach to Children's Services and its provision throughout the District and to review the provision of the Essex County Council Youth Service within the District.

### **Terms of Reference:**

1. To review the purpose, operation and effectiveness of Children's Services in Essex and the new Essex structure.
2. To review current provision of children's and young people's services in the District including identifying the level of activity directly provided by the Council and the key responsibilities devolved to the Council under the Children's Trust arrangements.
3. To review the provision of Essex County Council Youth Services in the Epping Forest District, seeking to identify future needs and how these can best be met by the various Agencies involved in the delivery of Young People's Services.
4. To review current arrangements for Safeguarding and Promoting the Welfare of Epping Forest's Children, seeking to identify communication pathways and effectiveness of information sharing, including:
  - the Council's own policies and procedures;
  - West Essex Stay Safe Group;
  - ECC Stay Safe Group, and,
  - Essex Safeguarding Children Board

CHILDREN SERVICES TASK AND FINISH PANEL: TERMS OF REFERENCE

**Aims and Objectives:**

To gather evidence and information in relation to the topics through the receipt of data, presentations and by participation in fact finding visits;

To consult with Partners, Agencies, Stakeholders and Users of the services under review, to establish key issues and future need;

To evaluate all relevant facts in relation to the topics under review in an objective way and to produce recommendations for future action accordingly;

To establish whether there are any resource implications arising out of the topics under review and advise Cabinet for inclusion in the Budget Process 2011/12; and

To report back to Overview and Scrutiny Committee at appropriate intervals and to submit any final reports in the proposed Corporate Format for consideration by O & S, the Cabinet and Council.

| <b>TIMESCALE</b>  | <b>ESTIMATED</b>                                | <b>ACTUAL</b>  |
|---|---|--|
| Commencement  | September 2010                                  | September 2010   |
| <u>Finish</u><br>1. Interim report to include any budgetary items for the next budget round.<br><br>2. As a time limited review - to end by April 2011. | By December 2010 (if needed).<br><br>April 2011 | Officers to consult Finance to establish if the Panel should put an interim bid for next years budget round. |

## EFYC Epping Forest Youth Council

In March 2010 Epping Forest Youth Council consulted with 340 young people from across the district, one of the main concerns raised was the lack of activities for young people to participate in. The young people said they were not aware of what was available to them and they wanted youth projects to clearly publicise what they provided.

In response to this, Epping Forest Youth Councillors mapped and researched the youth clubs and venues in the district and visited 12 youth projects over a three month period from July to September 2010.

The purpose of the visits was to anonymously review the clubs to assess the facilities and activities on offer to 11 – 18 years olds.

Mystery shopping findings:

### **1. The Box 4 ☆☆☆☆ Star Award** **134 High Street, Epping, Essex**

Overall The Box was found to be a great youth space for young people, as it offered a variety of services and expertise.  
The atmosphere was friendly and welcoming.  
The staff were friendly and helpful.  
There was a variety of activities to do and a great place to hang out with friends.  
Great location as it's on the High Street.  
Colourful décor.

#### **Suggested Improvements...**

Display publicity about the centre and highlight the opening times.  
(Especially during the summer holiday as one date when we turned up it was closed)  
Website was not up to date; the address had not been updated.  
Website at first can be confusing as there is a lot of information.  
A suggestion box for the users could enable them to have a say in The Box.  
Opening times could be later during the week (8pm).

### **2. The Deck 3 ☆☆☆ Star Award** **The Bridge, 29 Princes Road, Buckhurst Hill, Essex**

Overall The Deck was found to be a great place for young people, as it offered a variety of activities.  
The atmosphere was friendly and welcoming.  
The staff were friendly and helpful.  
The venue was a nice place to meet friends and the décor was fun.

### **Suggested Improvements...**

Need to promote the centre to get more young people there.  
Promote the opening times, especially during the summer holiday.  
Website was not well advertised and hard to find on the search engine.  
A suggestion box for the users could enable them to have a say in The Deck.  
To have a gender balance of staff on duty as there were no women working when we visited.

### **3. ignite 4 ☆☆☆☆ Star Award**

**The ignite Centre, 201 High Road, Loughton, Essex**

Overall ignite was found to be a great youth space for young people, as it offered a variety of activities and organised special events.  
The atmosphere was friendly and welcoming.  
The staff were friendly and helpful.  
Great place to hang out with friends.  
It is an energetic place with so much going on.  
Well attended and lots of staff around to chat with.  
Lots of space indoors and out.  
Great location.  
Good website.

### **Suggested Improvements...**

To open all year round as there isn't much to do during school holidays.  
Have a suggestion box for ideas.  
More publicity in schools.

### **4. Limes Farm Youth Club 4 ☆☆☆☆ Star Award**

**The Community Cabin, Limes Avenue, Chigwell, Essex**

Overall Limes Farm Youth Club was found to be a great youth space for young people, as it offered a variety of activities and organised special events.  
The atmosphere was friendly and welcoming.  
The staff were friendly and helpful.  
It was a great place to hang out with friends.  
It was a cosy place.  
Liked the wish list as everyone can contribute to what activities are organised.

### **Suggested Improvements...**

Send publicity about the centre to the local schools, as we live locally and didn't know about the Limes Farm Youth Club.  
Display the opening times.  
Stay open during the school holidays as there isn't much to do.  
No website.

### **5. Loughton Youth Centre 4 ☆☆☆☆ Star Award**

**Loughton Centre for Young People, 106 Borders Lane, Loughton, Essex**

Overall Loughton Youth Centre offered a variety of activities and organised special events during the summer programme.

The location is good as it is near a main road.  
The summer programme was good as there is not much to do in the school holidays.  
The staff were friendly and helpful.

#### **Suggested Improvements...**

Have leaflets to promote the youth centre.  
Send publicity about the centre to the local schools, as we live locally and didn't know about the Loughton Youth Centre.  
Display the opening times.  
Open all year round as there isn't much to do.  
Have a website and phone number.  
Young people were smoking by the entrance; this can be intimidating for visitors.

### **6. New Images 4 ☆☆☆☆Star Award**

**Waltham Abbey Youth 2000, 154 Brooker Road, Waltham Abbey, Essex**

Overall New Images was found to be a great place for young people to visit and take part in a wide range of activities and organised events.  
The building has lots of space.  
The staff were very friendly and helpful.  
The atmosphere was friendly and welcoming.  
There was information in the centre about local activities and events.  
The two opening times are good as they suit the different age groups.  
Unfortunately the location was remote and difficult to find as it had a small sign but it did not say it was a Youth Centre, as it is an industrial area the current sign could be a printing company.  
It is an isolated area, the short cut across the fields is not recommended.  
Good disabled access.

#### **Suggested Improvements...**

Bigger sign saying 'New Images Youth Centre.'  
Leaflets to promote the youth centre, we live locally and did not know about it.  
Send publicity about the centre to the local schools.  
Open all year round as there is very little to do in this area.  
Have a suggestion box for ideas.  
Tidy up and paint the walls.  
Get the website up and running as the opening page is very good.

### **7. Ongar Youth Centre 3 ☆☆☆Star Award**

**The Gables, Fyfield Road, Ongar, Essex**

Overall Ongar Youth Centre offered a variety of activities and organised special events during the summer programme.  
The location is good as it is near other facilities.  
The summer programme was good as there is not much to do in the school holidays.  
The staff were friendly and helpful.  
Staff challenged the bad language being used.

**Suggested Improvements...**

Have leaflets to promote the Youth Centre.  
Send publicity about the centre to the local schools.  
Display the opening times.  
Open all year round as there isn't much to do.  
Have a website and phone number.  
A suggestion box for the users could enable them to have a say in O.Y.C.

**8. The Space 4 ☆☆☆☆ Star Award****Loughton Youth Project, Loughton Library, Traps Hill, Loughton, Essex**

Overall The Space was found to be a great place for young people, as it offered a variety of services, expertise, training and a radio station. The atmosphere was friendly and welcoming. The staff was friendly and helpful. The venue was colourful with lots of photographs of local young people. There was a variety of activities to do and a great place to hang out with friends. There was a suggestion box for young people. Opening times were great.

**Suggested Improvements...**

Display publicity about the centre and highlight the opening times.  
Website was slow to download.  
Website at first can be confusing as there is a lot of information.  
Some publicity was out of date.  
Need more staff to ensure this project continues to provide this unique and excellent service.

**9. Theydon Youth 3 ☆☆☆ Star Award****Theydon Bois Community & Youth Centre, Loughton Lane, Theydon Bois, Essex**

Overall Theydon Youth provided a great atmosphere for local young people and organised special events for local residents. The location was difficult to find but the new premises will be bigger and known to local residents. The staff were friendly and helpful. The opening times were good.

**Suggested Improvements...**

Display the opening times.  
Open all year round as there isn't much to do locally.  
Have a website and phone number.  
Have a suggestion box for ideas.  
.Need more activities for variety.



## **10. We Don't Do Bored (W.D.D.B.) 3 ☆☆☆ Star Award** **Ninefields Community Hall, Ninefields Estate, Waltham Abbey, Essex**

Overall W.D.D.B. was found to be a nice safe place for local young people to hang out and take part in a wide range of activities and organised events.  
The location was easy to find and well sign posted.  
The Youth Club had great flyers and a link on the council's Website.  
The staff were very friendly and helpful.  
The atmosphere was friendly and welcoming.  
There was a lack of information in the hall about local activities and events.  
It was a shared building so they were not able to make it their own.  
Open all year.

### **Suggested Improvements...**

Information rack to promote activities and events in the local area.  
Open earlier, after school when there is nothing to do.  
Have a suggestion box for ideas.  
Disabled toilet to accommodate young people with disabilities.

## **11. Youth Bus 3 ☆☆☆ Star Award** **Sheering and Roydon locations**

Overall the Youth Bus is an excellent project as it can visit the villages where there are little or no facilities or activities for young people.  
In Sheering the staff did not have the bus; they said they can spend more time with the young people if they use their cars.  
They had organised sports activities that evening so the bus was not required.  
The staff arrived late and the young people were waiting for them to arrive.  
In Roydon the bus was parked in a car park and had lots of young people using it.  
There was a good atmosphere.  
The locations were difficult to find as we were not familiar with the villages.  
There was no publicity on the web, or in the village to promote where the bus parks.  
The staff were friendly and helpful.  
The opening times were good.

### **Suggested Improvements...**

Promote the route and times as young people would like to know when the bus is in their area.  
A bus time table would be a good idea.  
Open all year round as there isn't much to do locally.  
Have a website with a Google map to highlight where the bus will be parked.  
Have a suggestion box for ideas.  
Need more activities for variety.  
Be on time.

## **12. Youth Plus 5 ☆☆☆☆☆ Star Award**

**Ongar Youth Centre, The Gables, Fyfield Road, Ongar, Essex**

Overall Youth Plus was found to be an excellent centre for young people with learning disabilities or no disabilities, to develop circles of friends and to access social activities in the community.

The group aims to support its members in creating and accessing social activities, in making friends and in forming peer groups.

It offers a variety of activities and weekend events.

The atmosphere was friendly and welcoming.

The project is run by volunteers, they were friendly and helpful.

There was a suggestion box for young people.

Opening times were great.

Had a good website.

Great location as close to other facilities and good parking.

### **Suggested Improvements...**

Need a larger space for meetings.

**Epping Forest Youth Council  
October 2010**



# Youth Projects in Epping Forest 2010

## ★ The Deck - Buckhurst Hill

The Bridge, 29 Princes Road, Buckhurst Hill, Essex IG9 5EE  
Telephone: 0208 505 5001 [www.thebridge-buckhursthill.org.uk](http://www.thebridge-buckhursthill.org.uk)

## ★ Limes Farm Youth Club - Chigwell

The Community Cabin  
Limes Avenue, Chigwell, Essex IG7 5LT [www.essexlife.org](http://www.essexlife.org)

## ★ The Box - Epping

134 High Street, Epping, Essex CM16 4AG  
Telephone: 01992 577 300 [www.theboxepping.org.uk](http://www.theboxepping.org.uk)

## ★ Loughton Youth Centre - Loughton

Loughton Centre for Young People  
106 Borders Lane, Loughton, Essex IG10 3SB  
Telephone: 0208 502 8850 [www.essexlife.org](http://www.essexlife.org)

## ★ ignite - Loughton

The ignite centre, 201 High Road, Loughton, Essex IG10 1BB  
Telephone: 0208 508 6172 [www.igniteyouth.co.uk](http://www.igniteyouth.co.uk)

## ★ The Space - Loughton

Loughton Youth Project  
Loughton Library, Traps Hill, Loughton IG10 1HD  
Telephone: 0208 532 1911 [www.loughtonyouthproject.com](http://www.loughtonyouthproject.com)

## ★ Ongar Youth Centre - Ongar

The Gables, Fyfield Road, Ongar, Essex CM5 0GA  
Telephone: 01277 365 208 - 01992 565 137 [www.essexlife.org](http://www.essexlife.org)

## ★ Youth Plus - Ongar

A project for young people (14 - 25 years) with learning disabilities  
Ongar Youth Centre, The Gables, Fyfield Road, Ongar CM5 0GA  
Telephone: 01277 363 307 [www.youthplus.net](http://www.youthplus.net)

## ★ Theydon Youth - Theydon Bois

Theydon Bois Community & Youth Centre (local residents only)  
Loughton Lane, Theydon Bois, Epping, Essex CM16 7JY  
Telephone: 01992 815 982 [www.theydon.org.uk](http://www.theydon.org.uk)

## ★ New Images - Waltham Abbey

Waltham Abbey Youth 2000  
154 Brooker Road, Waltham Abbey, Essex EN9 1JH  
Telephone: 01992 763 953 [www.way2000.org.uk](http://www.way2000.org.uk)

## ★ We Don't Do Bored (WDDDB) - Waltham Abbey

Ninefields Estate, Waltham Abbey, Essex EN9 3EL  
Telephone: 01992 564 556

## ★ Youth Bus

Mobile youth project for 13 - 19 years  
Telephone: 01279 404464

**EFYC** Epping Forest Youth Council



Epping Forest  
District Council